



Walks



Map



News



Soci

Walk - Ilfracombe's Jubilee Gardens

0.4 miles (0.6 km)

📍 Jubilee Gardens, Ilfracombe - EX34 8AF → Jubilee Gardens, Ilfracombe

◆ Easy - Jubilee Gardens are formed on a steep slope above the Ilfracombe Museum located between Wilder Road and the sea, merging on its East side with the Landmark Theatre. Jubilee Gardens is an open, grassed area with flower beds, shrubs and trees criss-crossed with footpaths. The footpaths are of varying widths and gradients with uneven steps along all but one of the routes through the Gardens. For people who can manage the steep paths there are numerous wooden seats along most of the routes through the gardens.

Jubilee Gardens are formed on a steep slope above the Ilfracombe Museum located between Wilder Road and the sea, merging on its East side with the Landmark Theatre. Jubilee Gardens is an open, grassed area with flower beds, shrubs and trees, criss-crossed with footpaths.

To check that this walk is suitable for you click here (http://www.phototrails.org/default.cfm?walk=Jubilee-Gardens&page=trail&walk_id=179) where you can find additional mapping and photographs showing gradients, path surfaces, and other detailed information.

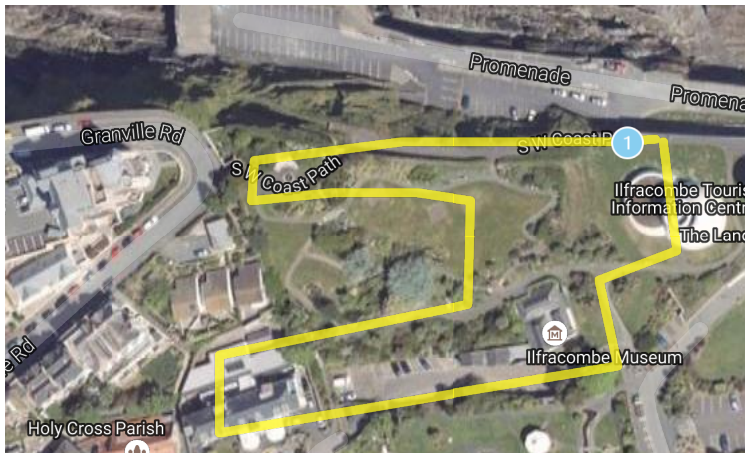
📍 Easy Access (</walksdb/tags/easy-access-walks/>)

🌙 Sleep

Become a Business Member >

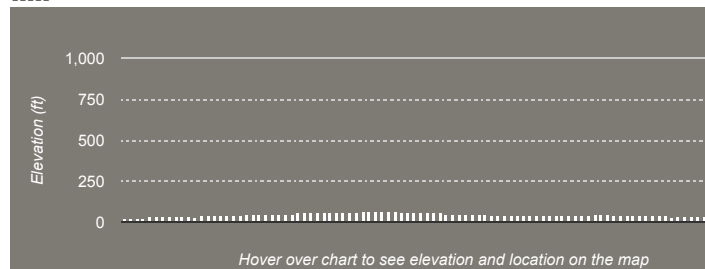
Reach thousands of walkers passing your business by having your advert here. Click for more information.

01752 896237





Interactive Elevation



- ✓ Easy walks
- ✓ Moderate walks
- ✓ Challenging walks
- ✓ Eat & Drink
- ✓ Sleep
- ✓ Do
- ✓ Bus stop
- ✓ Photographs
- ✓ Car park
- ✓ Toilet
- ✓ Place of interest
- ✓ Route change

Route Description

This walk is one of a series of walks to be found at www.phototrails.org (<http://www.phototrails.org/>) The website aims "to help everyone discover and enjoy access to the countryside, tailored to their own needs and preferences." It is run by the Fieldfare Trust (<http://www.fieldfare.org.uk/>) who work with people with disabilities and countryside managers to improve access to the countryside for everyone.

Although now North Devon's largest holiday town, Ilfracombe has its origins in Saxon times and is mentioned in the Domesday Book. During the medieval period it had two centres, around the church and around the harbour. It was important as a fishing harbour and commercial port and there was a quay here in the Middle Ages.

Ilfracombe began to develop as a holiday resort in the early 1800s, although it was the coming of the railway in the 1870s which really marked the beginning of the town's large-scale expansion. As a result of this it is now one of Devon's best examples of a town dominated by Victorian architecture.

Although much of the town dates from Victorian times, some of the prominent sea-facing terraces are earlier, from the 1830s, when it began to develop as a select resort.

- 1 *Jubilee Gardens are formed on a steep slope above the Ilfracombe Museum located between Wilder Road and the sea, merging on its East side with the Landmark Theatre. Jubilee Gardens is an open, grassed area with flower beds, shrubs and trees criss-crossed with footpaths.*

For further details about this walk go to the [Jubilee Gardens Phototrail](http://www.phototrails.org/default.cfm?walk=Jubilee-Gardens&page=trail&walk_id=179) (http://www.phototrails.org/default.cfm?walk=Jubilee-Gardens&page=trail&walk_id=179) on the Phototrails website.

Nearby refreshments

[Print OS \(Ordnance Survey\) M](#)

[Dogs on the coastpath >](#)

[Report a problem >](#)

[Safety advice >](#)

Share this page:

Local maps and publications

- > [A-Z 1:25,000 map book: North Devon & Somerset](http://shop.southwestcoastpath.org.uk/p/405.htm) (<http://shop.southwestcoastpath.org.uk/p/405.htm>)

Nearby Walks

Easy walks (4 wal

There are plenty of cafes and restaurants in Ilfracombe.

Public transport

Local Ilfracombe and Barnstaple bus services run along Wilder Road approximately 60m from Jubilee Gardens. 3,21a,30,31,32,35,300&302. For timetable information, zoom in on the interactive map and click on the bus stops, visit [Traveline](http://www.travelinesw.com/) (<http://www.travelinesw.com/>) or phone 0871 200 22 33.

Parking

There are two car parks that can be used for access to Jubilee Gardens. They are either side of the Landmark Theatre, 48 on the side nearest the sea and 51 between the Theatre and Wilder Road. In front of the Theatre are 3 accessible spaces and 4 more nearby outside Runnymede Gardens. All users have to pay for parking.

Moderate walks

(4 wal

Challenging walks

(2 wal

Current Conditions

19°

Overcast skies

Wind 23 mph S



Tomorrow

14° - 19°

Overcast skies

Wind 23 mph S



Next day

12° - 15°

Patchy rain possible

Wind 24 mph WSW





Department for Environment Food & Rural Affairs

(<https://www.gov.uk/government/organisations/department->

The European Agricultural Fund for Rural Development. Europe investing in rural areas for-environment-food-rural-affairs)



(<https://www.biglotteryfund.org.uk/ccf>)



SOUTH WEST WATER

(<http://www.southwestwater.co.uk/>)



(/about-coast-path/international-appala

trail/)

NATIONAL TRAIL



(/other-nat

© The South West Coast Path 2016

Terms & conditions (/terms-and-conditions, Contact us (/love-the-coast-path/about-us/contact-us,



(<http://www.facebook.com/southwestcoastpath>)



(<http://twitter.com/swcoastpat>)



(<http://www.pinterest.com/swcoastpathteam>)



(<http://www.flickr.com/photos/southwestcoastpath/collections/721576255966637>)